

NOTE:
SHED DORMERS ARE NOT AVAILABLE ON SAME SIDE
AS GABLE ENTRY SYSTEM

OPTIONS SHOWN
BALCONY
OPTIONS AVAILABLE
DORMER OPTIONS SHOWN
WINDOW FEATURE WALL
PLANS AS SHOWN WORKS WITH:
FOX HOLLOW 1, 2, 3, & 5 BECAUSE
OF STAIR DIRECTION.

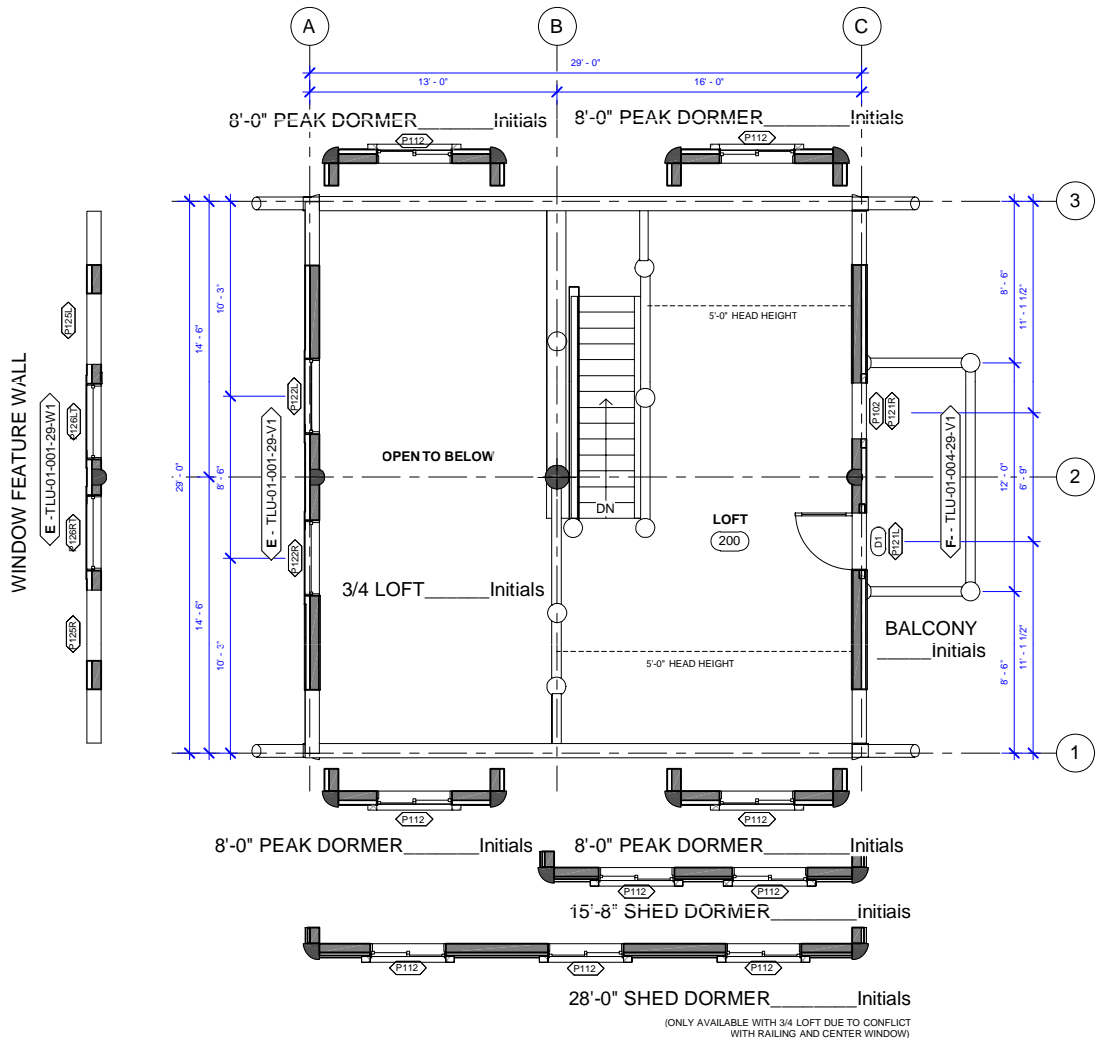


284 SQ FT (> 5 FT)
392 SQ FT TOTAL

FOX HOLLOW LOFT 1

SCALE: 1" = 10'-0"

V. 5.0



(ONLY AVAILABLE WITH 3/4 LOFT DUE TO CONFLICT WITH RAILING AND CENTER WINDOW)

NOTE:
SHED DORMERS ARE NOT AVAILABLE ON SAME SIDE AS GABLE ENTRY SYSTEM

OPTIONS SHOWN
BALCONY
OPTIONS AVAILABLE
DORMER OPTIONS SHOWN
WINDOW FEATURE WALL
PLANS AS SHOWN WORKS WITH:
FOX HOLLOW 1, 2, 3, & 5 BECAUSE OF STAIR DIRECTION.

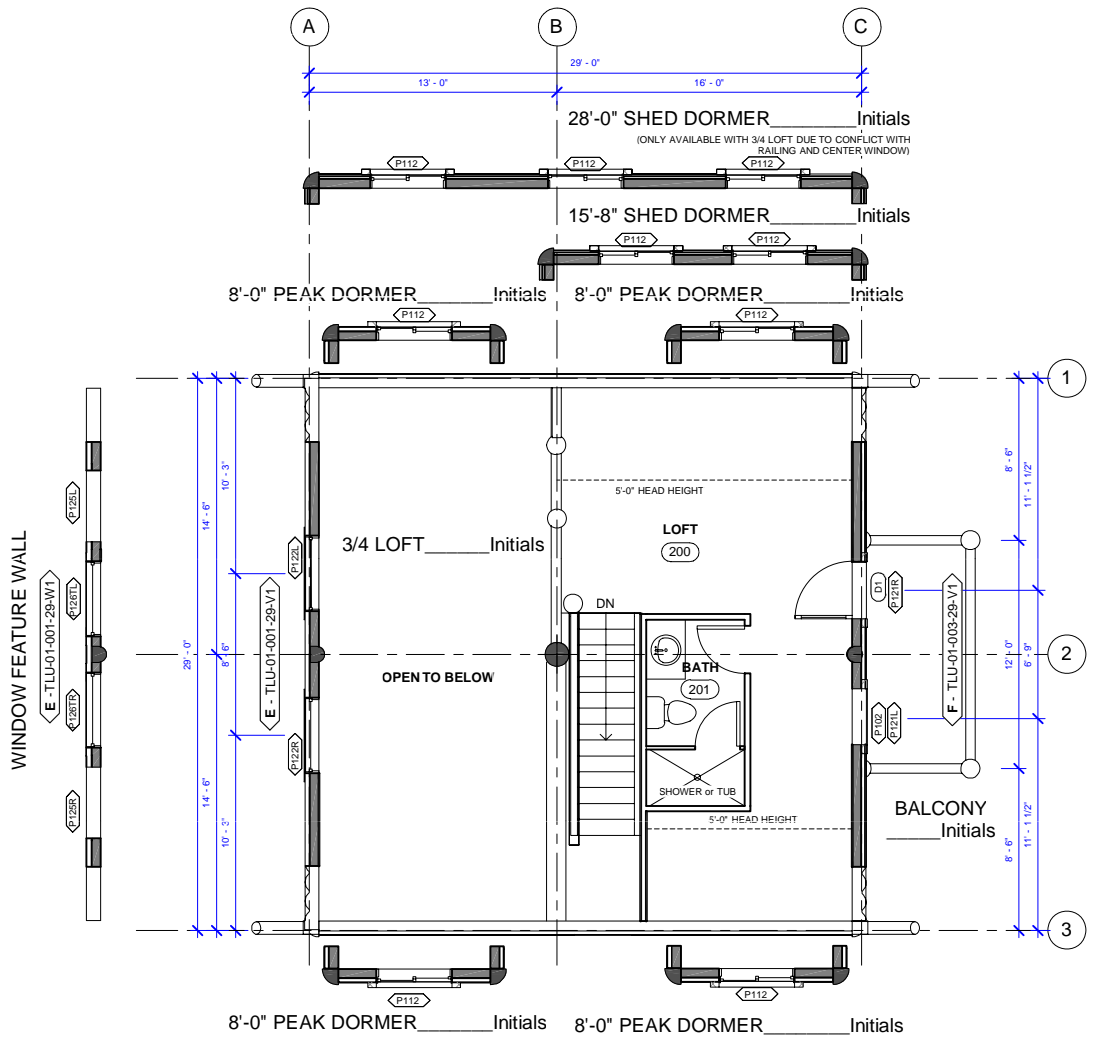
284 SQ FT (> 5 FT)
392 SQ FT TOTAL

WHISPER CREEK LOG HOMES

FOX HOLLOW LOFT 1M

SCALE: 1" = 10'-0"

V. 5.0



NOTE:
SHED DORMERS ARE NOT AVAILABLE ON SAME SIDE
AS GABLE ENTRY SYSTEM

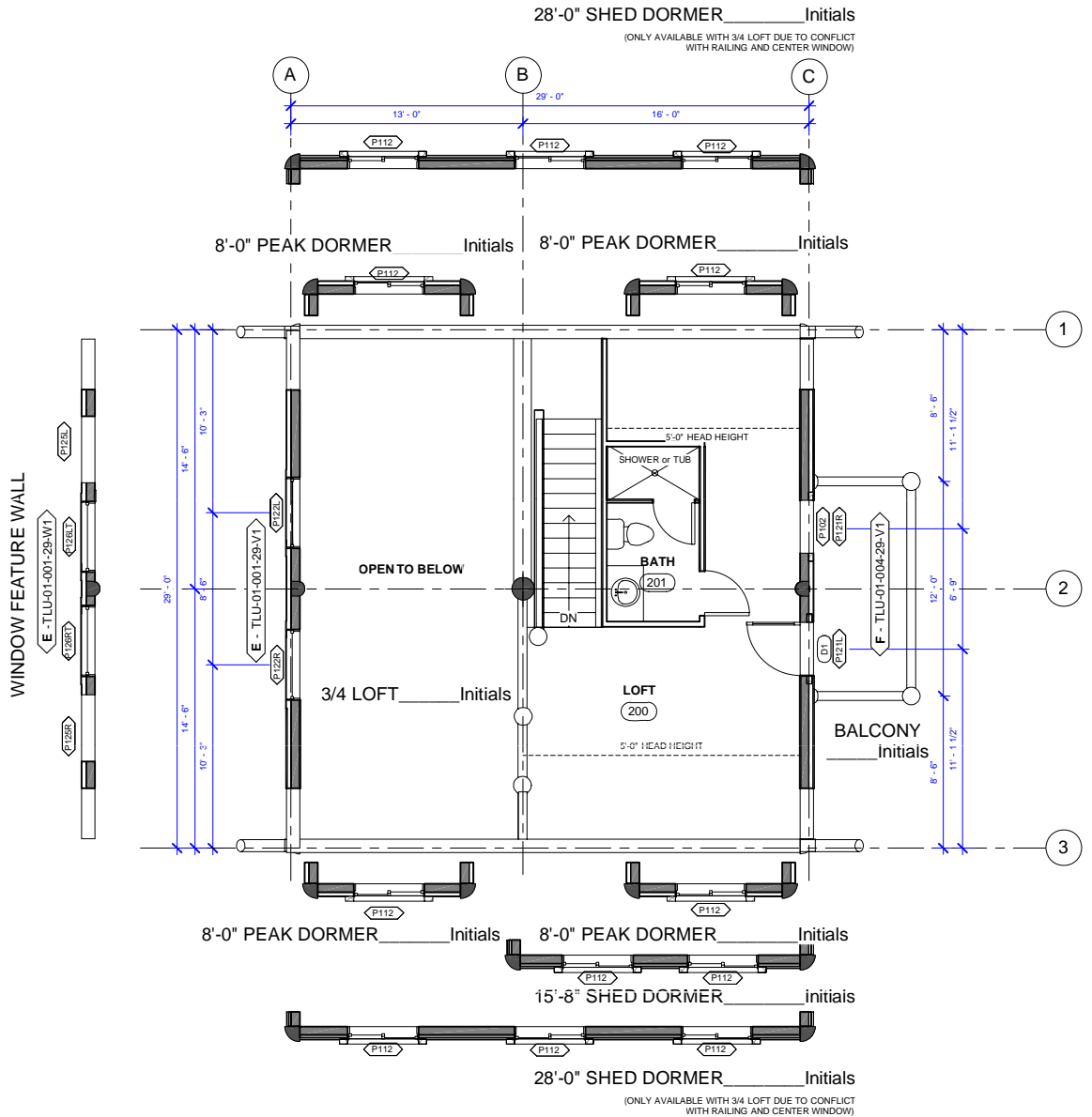
OPTIONS SHOWN
BALCONY
OPTIONS AVAILABLE
DORMER OPTIONS SHOWN
WINDOW FEATURE WALL
PLANS AS SHOWN WORKS WITH:
FOX HOLLOW 1, 2, 3, & 5 BECAUSE
OF STAIR DIRECTION.



284 SQ FT (> 5 FT)
392 SQ FT TOTAL

FOX HOLLOW LOFT 2

SCALE: 1" = 10'-0" V. 5.0



NOTE:
SHED DORMERS ARE NOT AVAILABLE ON SAME SIDE
AS GABLE ENTRY SYSTEM

OPTIONS SHOWN
BALCONY
OPTIONS AVAILABLE
DORMER OPTIONS SHOWN
WINDOW FEATURE WALL
PLANS AS SHOWN WORKS WITH:
FOX HOLLOW 4 BECAUSE OF STAIR
DIRECTION.

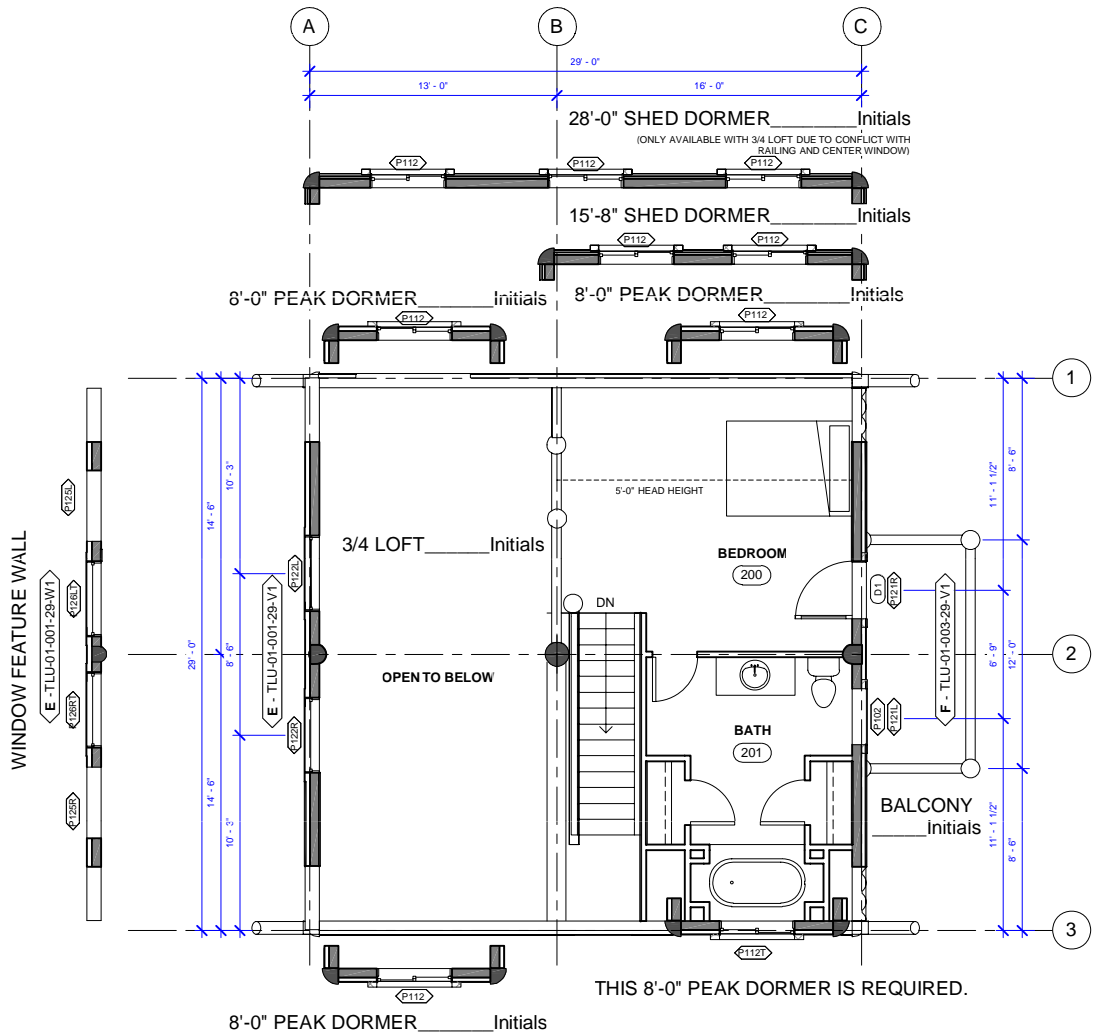
284 SQ FT (~ 5 FT)
392 SQ FT TOTAL

WHISPER CREEK LOG HOMES

FOX HOLLOW LOFT 2M

SCALE: 1" = 10'-0"

V. 5.0



NOTE:
SHED DORMERS ARE NOT AVAILABLE ON SAME SIDE AS GABLE ENTRY SYSTEM

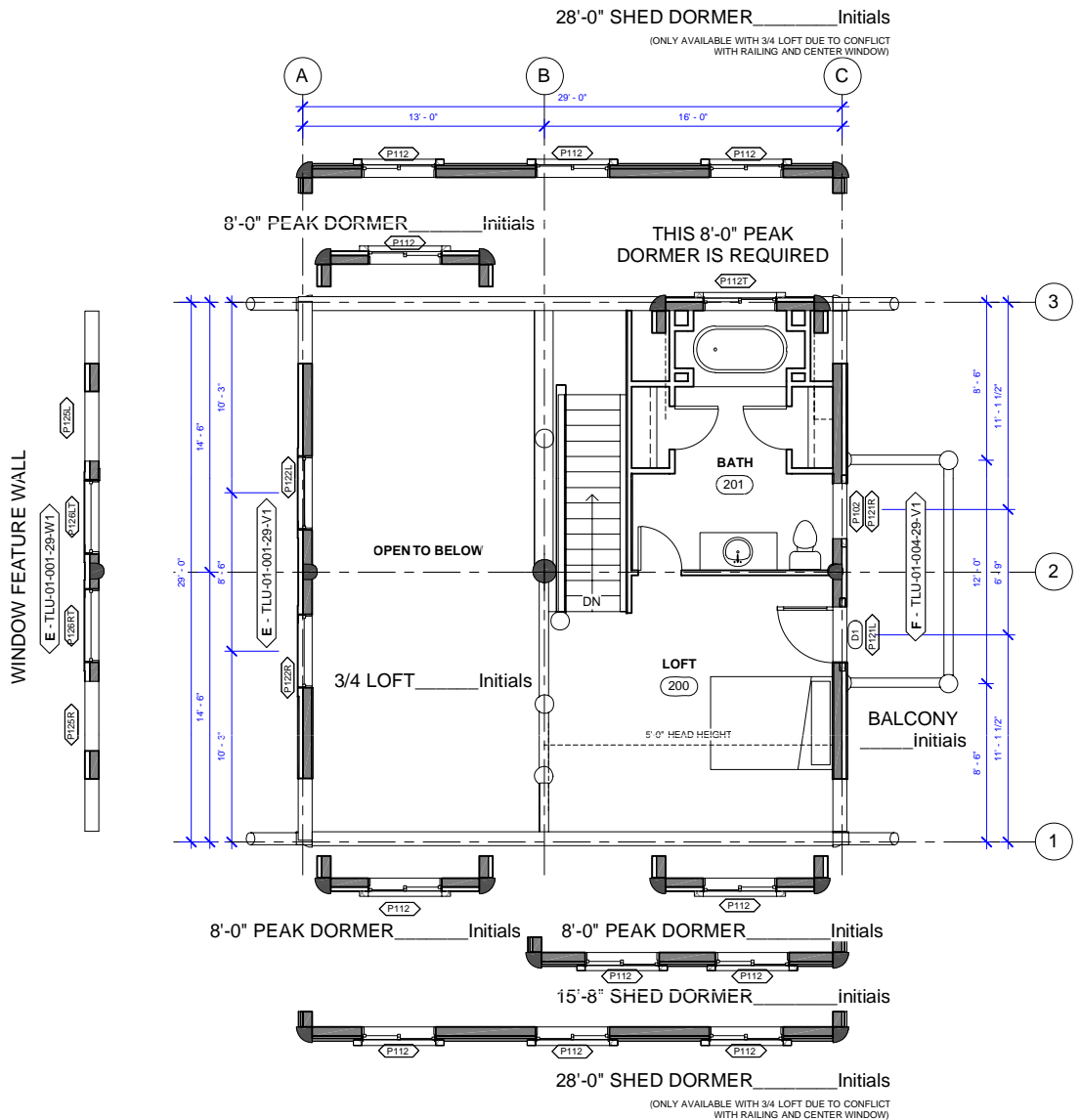
OPTIONS SHOWN
BALCONY
PEAK DORMER
OPTIONS AVAILABLE
DORMER OPTIONS SHOWN
WINDOW FEATURE WALL
PLANS AS SHOWN WORKS WITH:
FOX HOLLOW 1, 2, 3, & 5
BECAUSE OF STAIR DIRECTION.

WHISPER CREEK LOG HOMES

319 SQ FT (~ 5 FT)
392 SQ FT TOTAL

FOX HOLLOW LOFT 3

SCALE: 1" = 10'-0" V. 5.0



NOTE:
SHED DORMERS ARE NOT AVAILABLE ON SAME SIDE
AS GABLE ENTRY SYSTEM

OPTIONS SHOWN
BALCONY
PEAK DORMER
OPTIONS AVAILABLE
DORMER OPTIONS SHOWN
WINDOW FEATURE WALL
PLANS AS SHOWN WORKS WITH:
FOX HOLLOW 4 BECAUSE OF STAIR
DIRECTION.

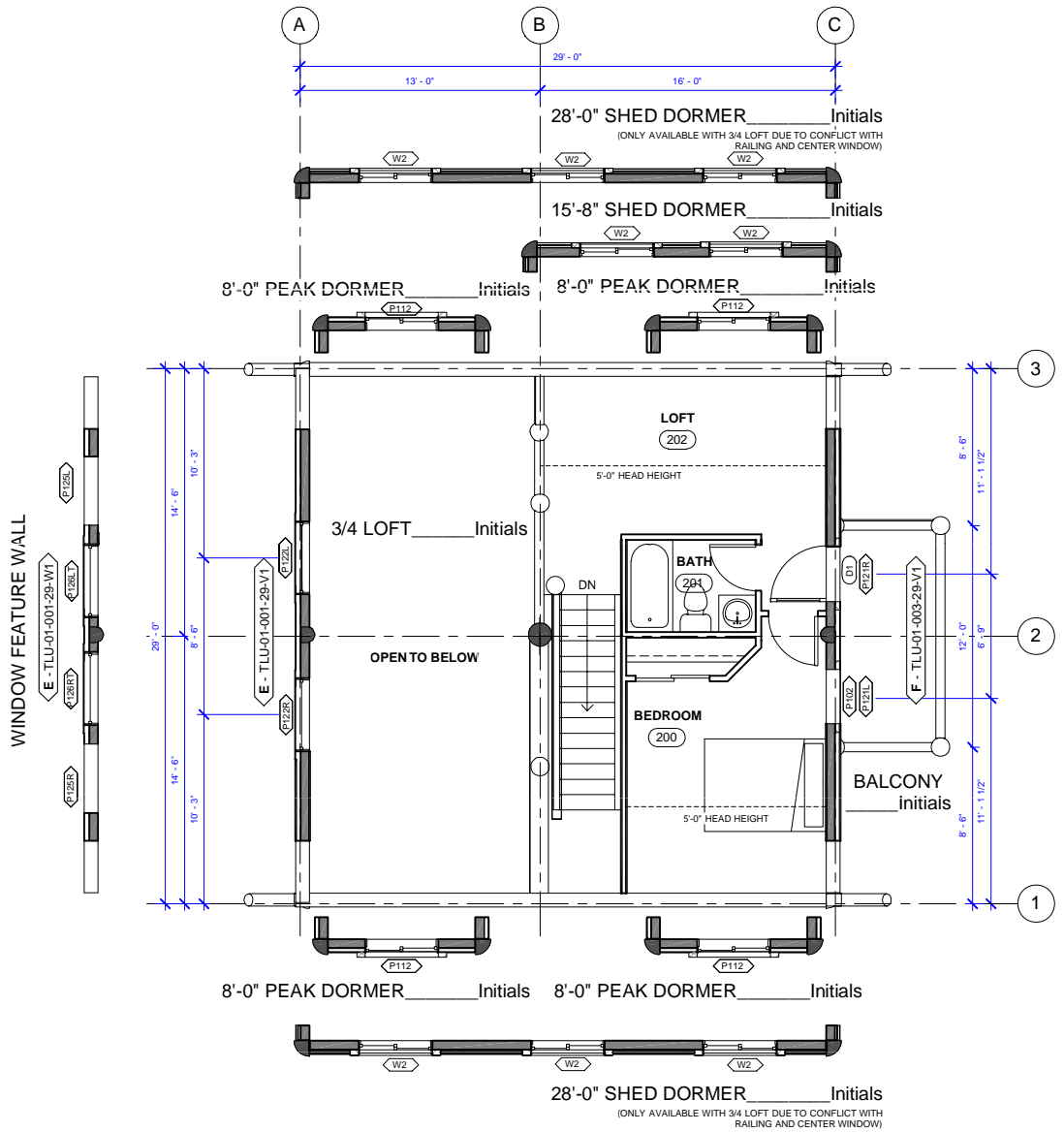
WHISPER CREEK LOG HOMES

FOX HOLLOW LOFT 3M

319 SQ FT (> 5 FT)
392 SQ FT TOTAL

SCALE: 1" = 10'-0"

V. 5.0



NOTE:
SHED DORMERS ARE NOT AVAILABLE ON SAME SIDE
AS GABLE ENTRY SYSTEM

OPTIONS SHOWN
BALCONY
OPTIONS AVAILABLE
DORMER OPTIONS SHOWN
WINDOW FEATURE WALL
PLANS AS SHOWN WORKS WITH:
FOX HOLLOW 1, 2, 3, & 5
BECAUSE OF STAIR DIRECTION.



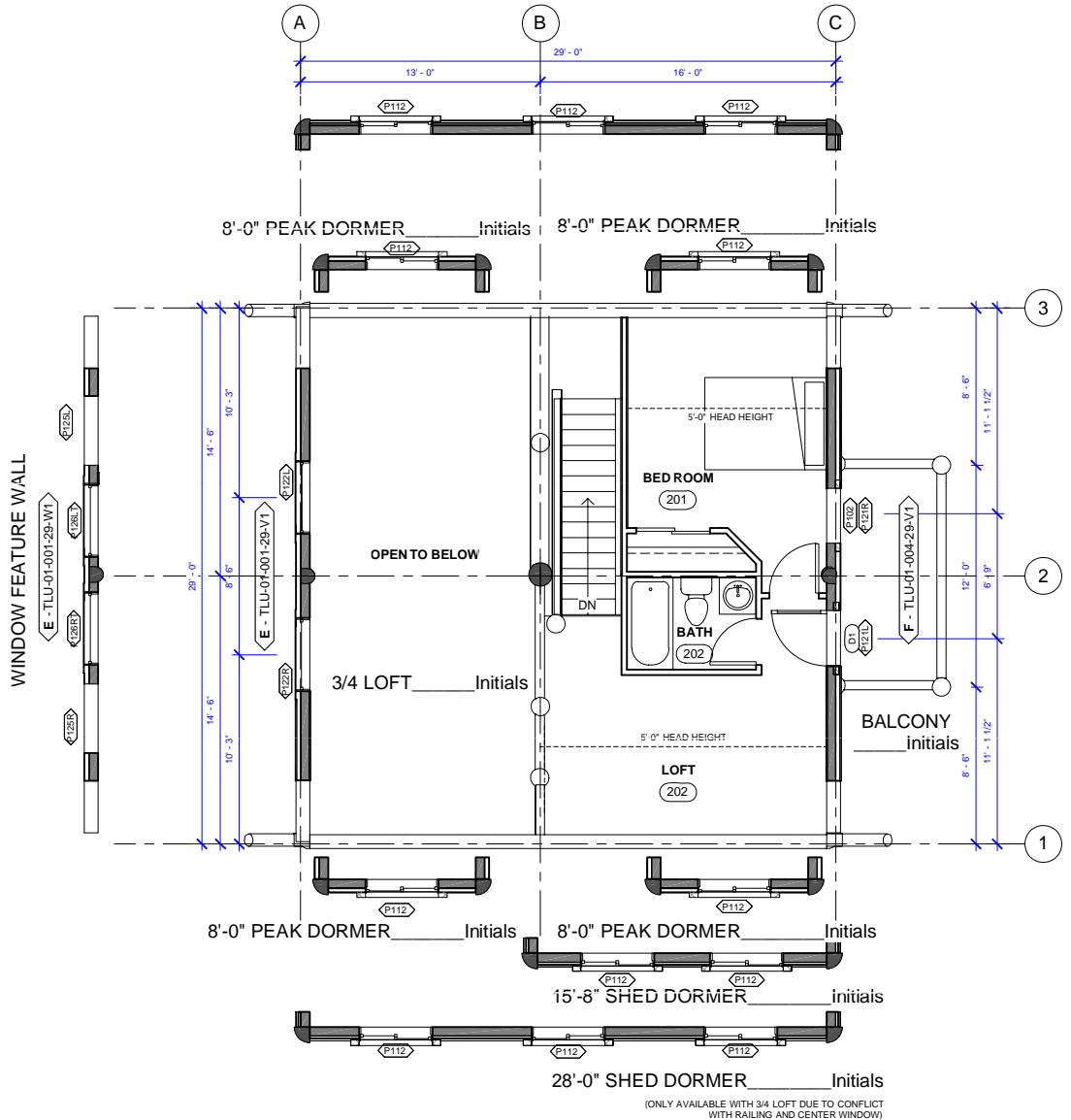
284 SQ FT (> 5 FT)
392 SQ FT TOTAL

FOX HOLLOW LOFT 4

SCALE: 1" = 10'-0" V. 5.0

28'-0" SHED DORMER _____ Initials

(ONLY AVAILABLE WITH 3/4 LOFT DUE TO CONFLICT WITH RAILING AND CENTER WINDOW)



NOTE:
SHED DORMERS ARE NOT AVAILABLE ON SAME SIDE AS GABLE ENTRY SYSTEM

OPTIONS SHOWN
BALCONY
DORMER OPTIONS SHOWN
WINDOW FEATURE WALL
PLANS AS SHOWN WORKS WITH:
FOX HOLLOW 4 BECAUSE OF STAIR
DIRECTION.

284 SQ FT (> 5 FT)
392 SQ FT TOTAL

WHISPER CREEK LOG HOMES

FOX HOLLOW LOFT 4M

SCALE: 1" = 10'-0"

V. 5.0